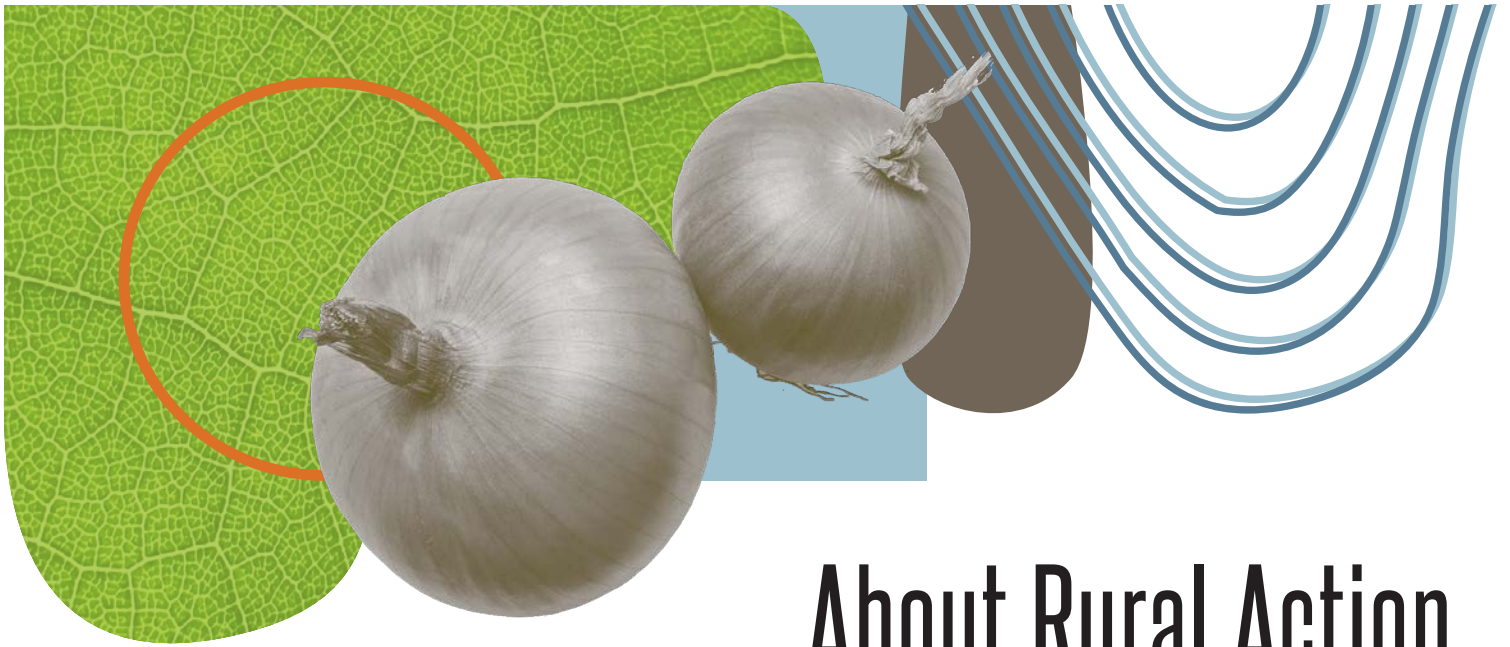


# Annual Report 2021



**Rural Action**  
Thriving Communities, Healthy Environments



# Table of Contents

# About Rural Action

Nestled in the foothills of Appalachian Ohio, Rural Action was founded in 1991 on the principle that locally-based, sustainable, and inclusive development is the main strategy for building resilient rural Appalachian communities.

Rural Action's mission is to build a more just economy by developing the region's assets in environmentally, socially, and economically sustainable ways. Together, we envision a region with clean streams and healthy forests; a place where thriving family farms, meaningful livelihoods and vibrant communities exist for everyone; with people engaged as good stewards of the world they live in and working together to make this vision a reality.

As a membership-based organization, we believe the best development is done with participation from diverse groups who have a stake in the outcome. Our role is to empower communities to value and take ownership of our environment, economy, and community, so we can meet the needs of the current generation while also building a just and sustainable future.

Rural Action continues to expand because there is great demand for smart, local solutions to global and regional problems. Our reach is made possible through a robust national service program, administered by Rural Action in partnership with more than a dozen Ohio organizations.

- 2 About Rural Action
- 3 Program Areas
- 4–5 Letter From Leadership
- 6 How We Work
- 7 Where We Work
- 8–9 By the Numbers
- 10–11 Fighting Pollution with Innovation
- 12–13 Economic Opportunity on the Road to Zero Waste
- 14–15 The Next Generation of Appalachian Leaders
- 16–17 Expanding with H2Ohio
- 18–19 Helping Forest Farmers Harvest Success
- 20–21 Finances & Funders
- 22–24 Members & Donors
- 25 In Memoriam
- 26 Board of Directors
- 26 Staff
- 27 Service Members & Interns & Seasonal
- 27 Social Enterprises



# Program Areas



## SUSTAINABLE AGRICULTURE

Each year we engage with hundreds of small, diversified farmers and landowners to understand their needs and provide tools to increase food production while reducing risk, enhancing profitability, and restoring local ecosystems. Our food access projects deliver healthy food to people who might not be able to find or afford it otherwise, and money is spent with local farmers.

## SUSTAINABLE FORESTRY

By providing resources for woodland owners we help them identify alternative income opportunities, like forest farming of ginseng, goldenseal, and other forest botanicals, conduct land restoration projects with native plants, and mitigate invasive species that can adversely affect forest health and diversity.

## SUSTAINABLE ENERGY SOLUTIONS

We work to catalyze clean energy development by supporting regional efforts to scale up energy efficiency, renewable energy, and clean transportation. We support a clean energy economy that provides living-wage jobs and the growth of a modern manufacturing sector that attracts and retains our skilled Appalachian workforce.

## WATERSHEDS

Serving as a leader in stream restoration since 1994, we work with communities to provide watershed management services including chemical and biological water quality monitoring, watershed planning, restoration and protection management, and community organizing around water resources, helping to ensure access to clean water across our region well into the future.

## RESILIENT COMMUNITIES

Our team works with communities to strengthen economic, environmental, and social health. Ecotourism, outdoor and cultural recreation, creative placemaking, and entrepreneurial support provide real opportunities for local communities to thrive.

## ZERO WASTE

We promote the development of a zero-waste economy where product development prioritizes conservation of natural resources and product design incorporates ways to facilitate and encourage post-consumer reuse, repair, recycling, or composting, and discards become assets that benefit the people, the planet, and the local economy.

## ENVIRONMENTAL EDUCATION

We connect students and teachers with outdoor learning in Appalachian Ohio. By learning in nature, we help young people develop a sense of place and give them the tools to make informed decisions about their natural resources as well as evaluate their future career paths.

## NATIONAL SERVICE

Appalachian Ohio Restore Corps members and VISTAs help educate youth and the public, restore, conserve, and preserve environmental resources, improve food distribution, support reduced waste and recycling initiatives, and support economic resilience through climate change mitigation and sustainability projects.

## SOCIAL ENTERPRISE

Social enterprise exists on a continuum that blends a market approach with a mission that helps the community and the environment. The triple bottom line approach of using business tools to foster prosperity, protect the planet, and benefit people is the sweet spot of social enterprise.

Our social enterprises include the Chesterhill Produce Auction, Zero Waste Event Productions LLC, True Pigments LLC, UpCycle Ohio Thrift, the Community Makerspace, and Appalachian Understories.





# Letter From Leadership

Rural Action celebrated its 30th anniversary in 2021, an event that prompted several longtime staff and alumni to reflect on the impact the organization has had during its three decades of existence.

Chesterhill Produce Auction. Upcycle Ohio Thrift Store and Community Makerspace. The Reuse Corridor. The Appalachian Green Teachers Conference. True Pigments. Zero Waste Event Productions. These are just a few of the initiatives Rural Action, its partners, and its members have made possible. Each, in its own way, is a key component in developing our region's assets in environmentally, socially, and economically sustainable ways.

But perhaps all it takes to understand the progress is a single, massive channel catfish in Monday Creek. Watersheds Program Director Nate Schlater was water sampling when a local resident showed him a cell phone video of the beefy channel cat, happily swimming in water that was too toxic for fish not that long ago.

Nate told me this year that he's spent years monitoring fish in Monday Creek and never seen anything like this come out.

The fish's presence is an indication of how much local waterways have healed in the wake of historic coal mining that left many streams in Appalachian Ohio orange and lifeless. It's taken 30 years. Much still remains to be done. But, working together, we're making progress.

In 2021, we began laying the foundation to help us meet the challenges of the next 30 years. Looming large is climate change. Appalachian Ohio is expected to fare better than many places in the world in this regard, though we will still feel the impact, and we expect to see an influx of climate refugees.

In this report, you'll read about 2021 initiatives that are designed to prepare Rural Action to meet the challenges of climate change, protecting our environment, providing healthy food, and creating a sustainable economy. It's a story of growth. And it's a long game. Solutions don't come quickly or easily. Thanks to our partners, donors, and members, we will be better prepared for what's next.

Here are a few of the efforts you'll read about in this annual report:

- **True Pigments** — using innovation to counter the effects of historic coal mining on local waterways.
- **The Reuse Corridor** — a network of individuals and organizations who are collaborating to make our region zero waste, from dealing with difficult to recycle items to processing recyclables in local communities to create economic opportunities and avoid the carbon footprint of shipping materials long distances to be processed.
- **National Service** — a program critical to our ability to “get things done” is about to undergo a major expansion, placing more members in streams, on auction floors, and at the forefront of countering climate change.
- **H2Ohio** — an expansion of our Watersheds program that will have us working initially on water quality in the west Lake Erie basin and that will create numerous new opportunities to expand and grow our efforts to restore watersheds.
- **Entrepreneurship** — programs that provide help and mentorship to beginning farmers, including a forest farmer who has been able to quit his day job to dedicate his time to growing mushrooms and forest botanicals.

In short, we're not resting on our laurels. The initiatives we launched in 2021 will better prepare our organization to help the people of Appalachian Ohio meet past, present, and future challenges.

“Seeing a fish in a stream that hasn't been there for 100 years is exciting,” Nate shared. “You tell those stories for years to come.”

We hope this is one of many fish tales we'll be telling when we celebrate our 60th anniversary.



*Mary Ann Borch*

**Mary Ann Borch**  
Chair of the Board



*Debbie Phillips*

**Debbie Phillips**  
Chief Executive Officer





# How We Work

## OUR MISSION

Our mission is to build a more just economy by developing the region's assets in environmentally, socially, and economically sustainable ways.

## OUR CORE WORK CENTERS ON:

- Helping small communities do big things
- Growing local businesses and jobs
- Restoring our environment
- Cultivating the next generation of leaders

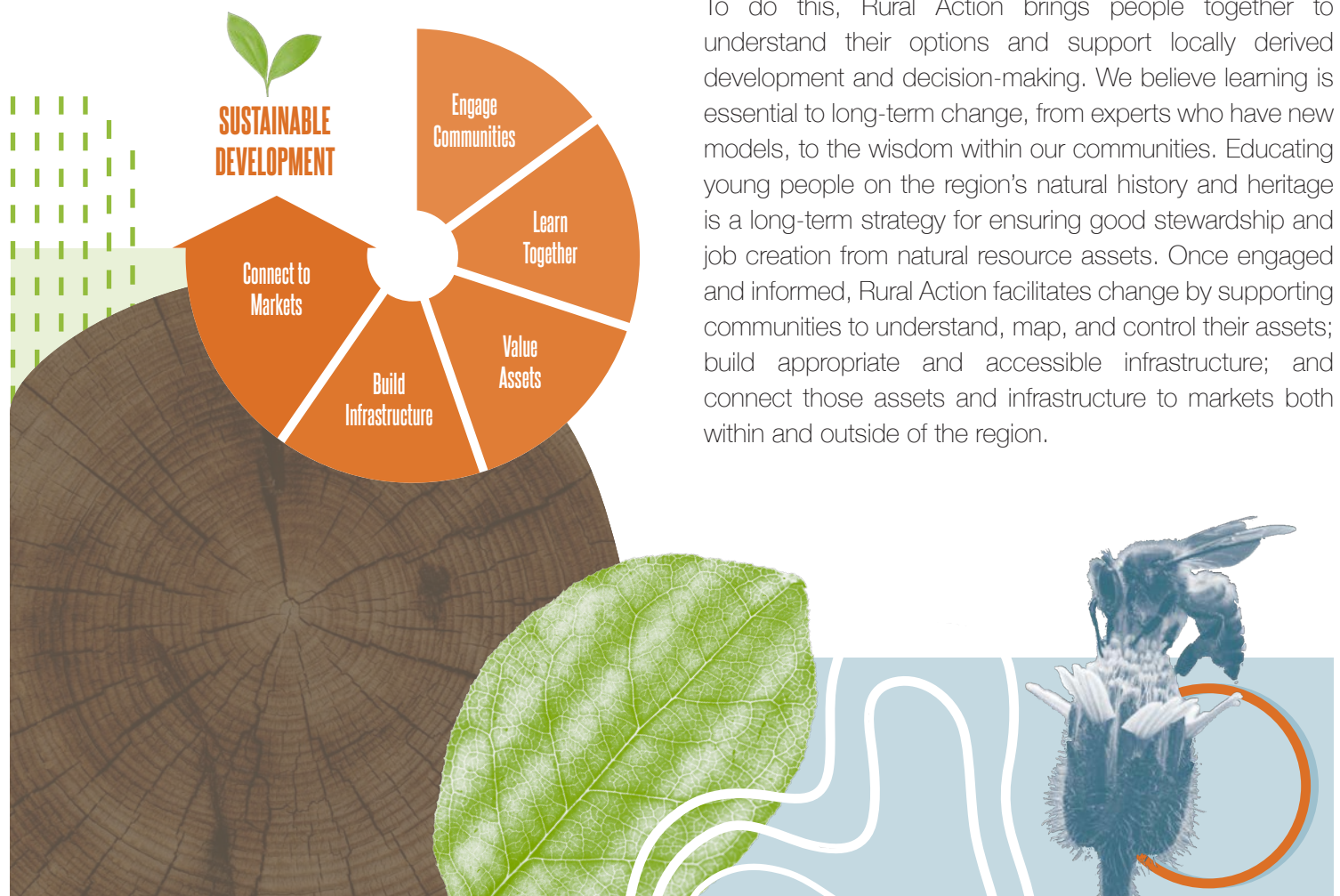
Our decades of experience working in Appalachian Ohio have taught us some critical lessons which have shaped our approach to participatory development. Our approach is rooted in the work of many partners across Central Appalachia and rural America who believe we have the power to write our preferred future.

## OUR THEORY OF CHANGE

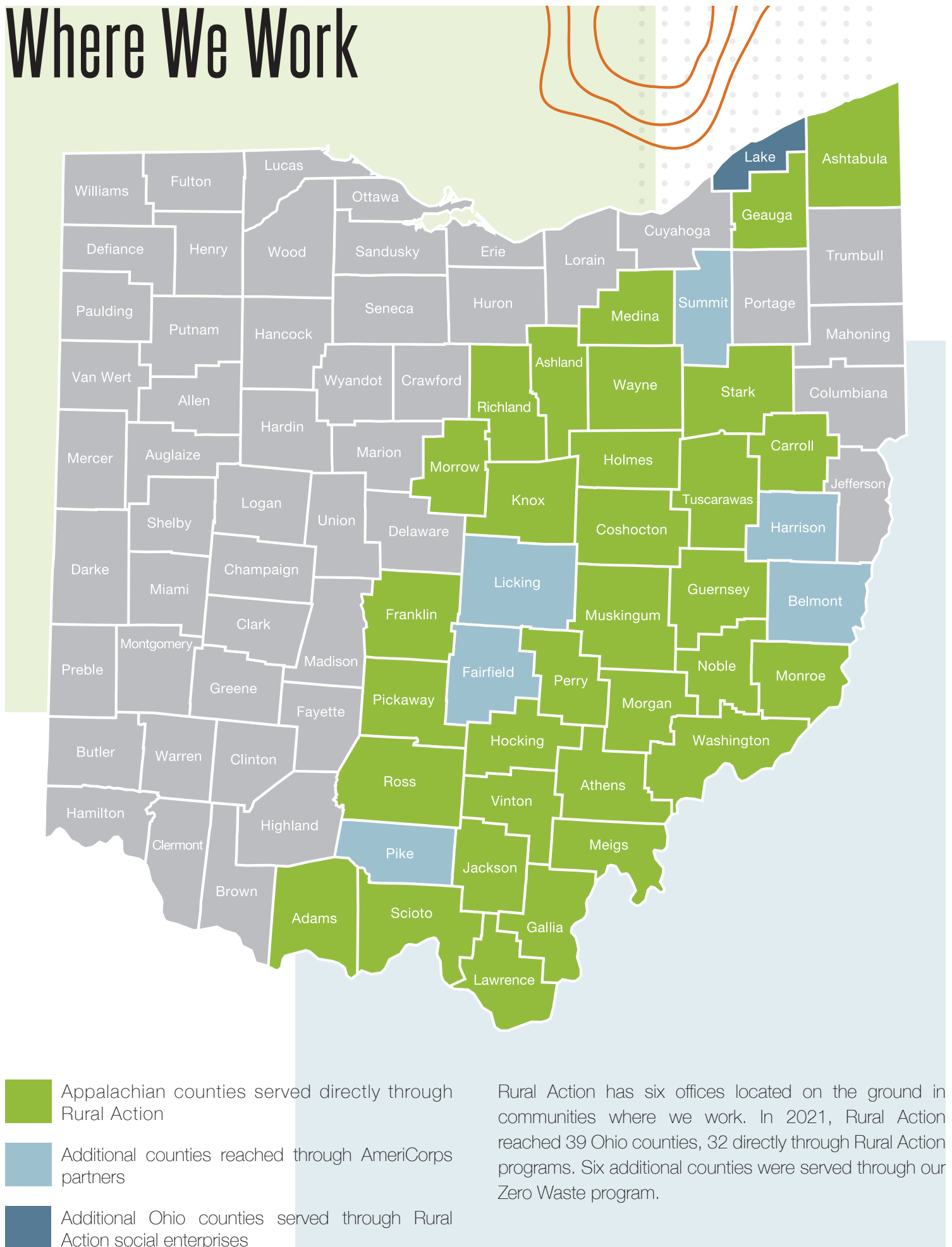
Rural Action's community development approach is the result of decades of careful work to increase local control over the region's rich assets and to give power to the people who are committed to this place, whether for generations or new arrivals. Appalachian Ohio is still recovering from the effects of extractive industries, especially coal mining, which declined by the mid-twentieth century. Such industries resulted in widespread environmental degradation, unemployment, population loss, and weak economies that persist to this day.

To counter these forces, the region needs development from within that is consistent with its assets. Rural Action members have a goal of more equitable development and greater opportunities for the people of Appalachian Ohio. We believe achieving this goal requires the wide adoption of sustainable systems and practices in the region.

To do this, Rural Action brings people together to understand their options and support locally derived development and decision-making. We believe learning is essential to long-term change, from experts who have new models, to the wisdom within our communities. Educating young people on the region's natural history and heritage is a long-term strategy for ensuring good stewardship and job creation from natural resource assets. Once engaged and informed, Rural Action facilitates change by supporting communities to understand, map, and control their assets; build appropriate and accessible infrastructure; and connect those assets and infrastructure to markets both within and outside of the region.



# Where We Work



Rural Action has six offices located on the ground in communities where we work. In 2021, Rural Action reached 39 Ohio counties, 32 directly through Rural Action programs. Six additional counties were served through our Zero Waste program.

# By the Numbers

## 114 BUSINESSES

improved through the Resilient Communities program with over

**\$96,000**

in Resilience Fund Emergency Grants, website creation and training, small business workshops, and the Trail Town Business Challenge

## OVER 100 ATTENDEES

at Tuscarawas County outdoors events including canoe floats, kids camps, and watershed tours



## 1,700 TREES PLANTED

in Riparian areas by the Watersheds and Forestry programs, which help reduce flooding, build up of sediment, and erosion, keeping our waterways clean and intact

## 4,485 INDIVIDUALS EDUCATED OR TRAINED

in environmental stewardship and environmentally conscious practices through trainings led by national service members

Appalachian Understories, Rural Action's newest social enterprise, coordinated

## 20 TOURS AND EVENTS

before the new year following their launch in September 2021

Provided a tool library service out of the Community Makerspace in partnership with Athens County Public Libraries to community with

## 3,000+ FREE LOANS OF 298 TOOLS





## 260 FAMILIES IN 5 COUNTIES

served through produce prescriptions distributed through partnerships with Coplin and Hopewell, which provide access to fresh produce and nutritional advice as preventative healthcare

## 650 HOUSEHOLDS REACHED

through CHaRM (Center for Hard to Recycle Materials) events and

## 148,128 POUNDS OF MATERIAL

diverted from the waste stream

## 1,378 ACRES OF LAND

evaluated and provided with management plans through site visits from the Forestry program, and

## 1,600 RAMP BULBS AND 80 POUNDS OF GINSENG

sold to promote non-timber forest products

## 257 SAMPLES

taken in the Walhonding Watershed, which help identify areas for preservation and restoration

The Silver Creek site in the Mud Run Watershed achieved a biotic integrity

## SCORE OF 40,

up from of 26, reaching its goal for acid mine drainage recovery



## OVER 48 HIGH SCHOOL INTERNS

placed through the Environmental Education program at Rural Action and various partners and businesses across the region

**READ ON FOR STORIES FROM OUR  
PROGRAMS AND PARTNERS**



## FIGHTING POLLUTION WITH INNOVATION

Why is it taking so long?

That's a question Michelle Shively MacIver fielded from a potential investor in True Pigments, a social enterprise of Rural Action that is working to turn acid mine drainage (AMD) that taints many local streams into a marketable pigment for paint and other products.

"I was explaining that our facility is being built on a flood plain, to which she asked why we don't build it somewhere else," says Michelle, True Pigments Director of Project Development. "I tried to explain that having it on Sunday Creek is the whole point. That's what we're trying to clean. This is our home, our people, our community. The whole reason we spent 10 years creating this technology is to clean this stream."

The question reveals that many might be unfamiliar with how a social enterprise works. Yes, being profitable and quick to market is important. But the effort to clean Sunday Creek is just as important, if not more so.

Rural Action now supports six social enterprises: Zero Waste Event Productions, Chesterhill Produce Auction, UpCycle Ohio Thrift, the Community Makerspace, Appalachian Understories, and True Pigments.







Rural Action has been working on watershed restoration for 30 years and has improved 74 miles of streams. But the AMD discharge in Sunday Creek at Truetown needed a big fix. With considerable help from the Ohio Department of Natural Resources (ODNR) and Ohio University, Rural Action launched True Pigments, which will treat the 988 gallons of AMD entering Sunday Creek every minute.

In 2021, Michelle and our partners at Ohio University, ODNR, and other entities worked to prepare for construction to begin on the True Pigments plant.

"We had a chance to run more experiments on site at Truetown during 2021 and we answered some of the lingering questions that we've had on how to scale up the process," Michelle says. "Moving into 2022, when we'll be breaking ground, we ran the pilot plant through specific batches, doing new experiments, and running it continuously. We harvested more iron to send to Gamblin Artist Colors for use in paint."

True Pigments also brought in West Tech, a Salt Lake City-based engineering firm that has experience scaling up big industrial plants.

"We updated the business plan and met with potential investors," she says. "Talking with investors is a lot of educational outreach. It's such a niche business. It's not a traditional pigment or wastewater treatment business. It's this weird thing no one else is doing right now for profit. That's been a learning curve."

To her credit, the potential investor finally came to understand True Pigments' goals and why an alternative location wasn't an option. "We have people who have asked for second and third meetings on investment, but we're still navigating that," Michelle says.

"We've created the conceptual foundation and framework for both the business and the physical plant," she says. "It's really exciting because we're going to be breaking ground soon."





# CREATING ECONOMIC OPPORTUNITY ON THE ROAD TO ZERO WASTE

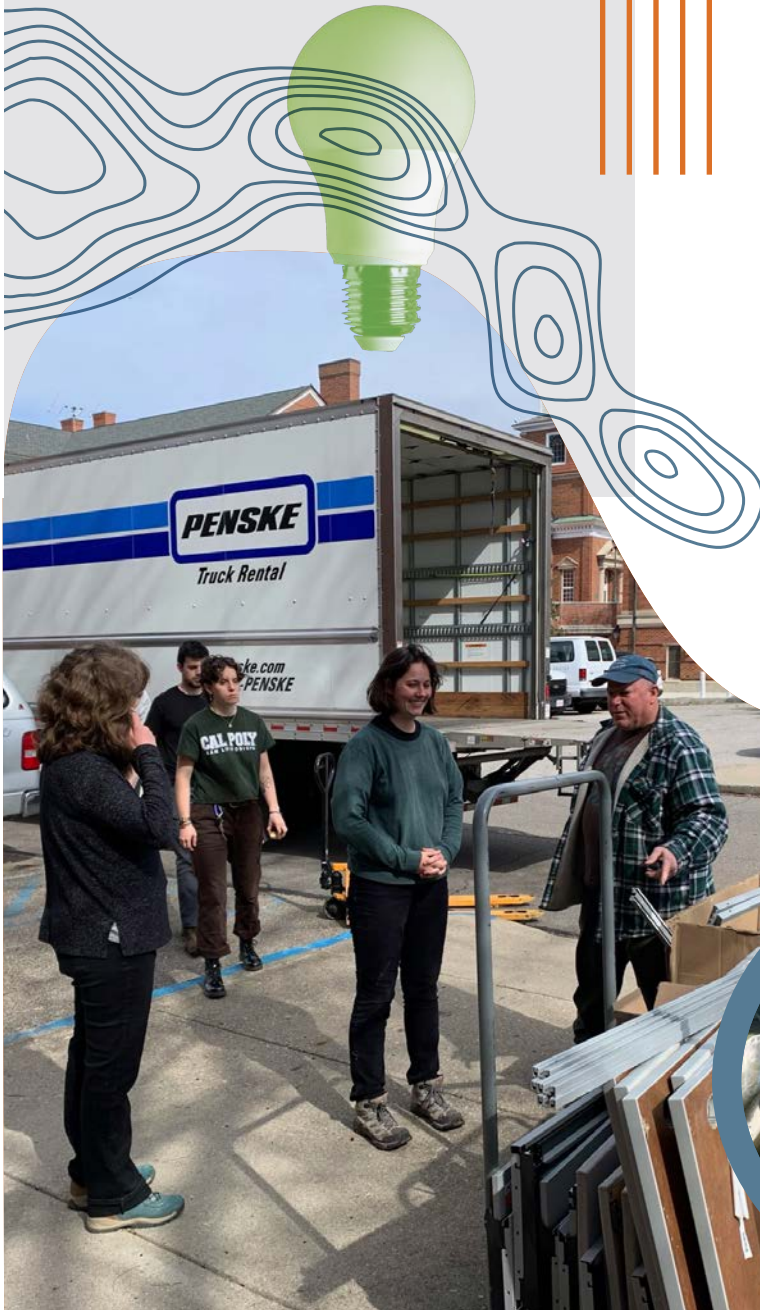
It takes a village to be zero waste. Or in the case of Appalachian Ohio, it takes many villages working together.

That's how Rural Action and our partner organizations created the Reuse Corridor, which facilitates recycling and upcycling to divert materials from landfills and create new economic opportunities in local communities across the region. The effort had a key additional benefit – it created a network of people working together and sharing ideas to be more effective. This multistate collaboration, made possible through a partnership with the Coalfield Development Corporation, has led to the rapid adoption of Centers for Hard to Recycle Materials (CHaRMs), which focus on materials like mattresses, electronics, and tires.

“We met at the Reuse Corridor meetings and started discussing how we could work off each other, how we could become more efficient on our zero waste goals,” says Rick Jansen, executive director of the Lawrence/Scioto Solid Waste Management District. When Rural Action Zero Waste Director Ed Newman was taking a load of textiles to The Neighborhood in Ashland, Ky., he stopped by Rick’s office and they started brainstorming.

“CHaRMs are a great way to get people together, create partnerships and build on the network of people who are helping with the bigger picture,” Ed says.

The result of that brainstorming session was two successful CHaRM events in 2021 — in Proctorville and Portsmouth — and plans to hold four more in 2022.







"We are seeing a slight decrease in trash that's being pitched thanks to the CHaRMS," Rick says. "We had no idea how bad it was when I came to this job. The volume is slowing down a bit but there's a lot of work to do to get caught up."

"I can see these mobile CHaRMS being a convenient avenue for a lot of people to get involved in recycling instead of staying on the sidelines because it's too much effort."

There's also a potential economic benefit to processing materials locally instead of sending them to far-flung places.

"There is money in trash," Rick says. "There is money in recycling. That's what I'm hoping the end result will be with all these meetings and groups combining their talents."

As local communities embrace CHaRMS, they're able to adapt the process to make it their own and meet their needs.

"Our successful partnership highlights why the Zero Waste program is doing mobile CHaRMS across eight counties, and it showcases just how successful these can be and how counties can move forward in planning their own mobile CHaRMS or permanent CHaRMS," says Rural Action Zero Waste Manager Maria Bonner.





# CREATING THE NEXT GENERATION OF APPALACHIAN LEADERS

"Wow! That's a great idea."

It's a phrase Rural Action Environmental Education Director Joe Brehm utters often. In this instance, he was responding to a co-worker's off-hand remark that a senior at Trimble High School should apply for an open AmeriCorps position with his team.

"I don't even know what that is," Alison McCoy recalls thinking as Joe pushed forward. But she's known Joe since she first met him during a summer camp when she was 8 or 9 so she knew it must be a good thing, especially if it meant she got to work with Rural Action.

"I can get the paperwork for you," Joe said. And Alison was on her way to serving a year-long National Service term. While she's doing that, she's finishing her senior year working remotely and also taking college classes at Hocking College.

Alison's relationship with Rural Action is an example of how our Environmental Education program strives to educate the youth (and adults) of Appalachian Ohio. They learn to understand why it matters when creeks flow orange with acid mine drainage. They also get a chance to explore potential career opportunities through National Service and the high school internship program we collaborate on with Building Bridges to Careers.

It also shows how our programs work together to enhance their impact. Our Leadership and Service program spent 2021 preparing for a major expansion, with plans to increase AmeriCorps and VISTA positions in the Appalachian Ohio Restore Corps from 41 members to 80. More National Service members will be joining Alison to help us get things done throughout the region, from countering climate change to cleaning streams to distributing fresh local produce in food deserts.







For Alison, who earned Rural Action's Youth In Action Sustainability Award in 2021 and has served internships with Burr Oak Nature Center and Community Food Initiatives' Veggie Van, it all came full circle when she returned to Trimble to talk to students in the talented and gifted class.

"The same teacher still teaches it, and I was in the first group that went from fifth grade up through high school in that group," Alison says. "She asked me to share my experiences so her students would know what is possible for them."

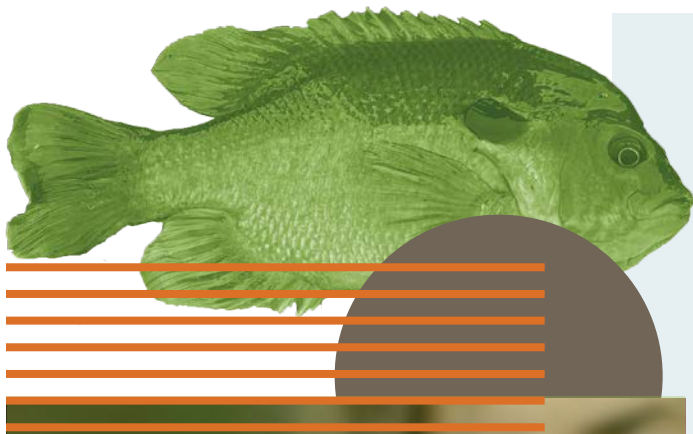
"I'm getting a stipend from AmeriCorps to do the things that I was volunteering to do as a kid," Alison says. "While I'm in high school, living at home in a family who doesn't have a lot of money in the first place, I'm able to earn money and start saving for things that are important for me."

"I've been told my whole life I'd be a good teacher. This gives me a chance to interact with students, adults and people my own age who I've been able to teach."

"Rural Action feels almost like home," Alison says. "Everything feels so comfortable. It's the safest place I've been in a way. It's done a lot for me outside the work itself. It's gotten me out of my house and helped me see the world more."







## SCOPE OF WORK EXPANDING WITH H2OHIO

Rural Action's Watershed program spent 2021 preparing for a major expansion in its work with a project to restore wetlands in the Western Lake Erie Basin watershed, funded by the H2Ohio program, which was developed in response to water quality problems including harmful algal blooms on Lake Erie caused by phosphorus runoff from fertilizer, failing drinking water, wastewater, and home sewage treatment systems. Our project will use data to target areas that can have the most impact on solving the problem, which sets it apart from past efforts.

"It's pretty far outside the region we've historically worked in, but it's a statewide initiative," says Julia Sullivan, who joined Rural Action in 2021 as our Watershed Restoration Project Manager to coordinate the project. "We hope to apply what we are learning to the Appalachian region."

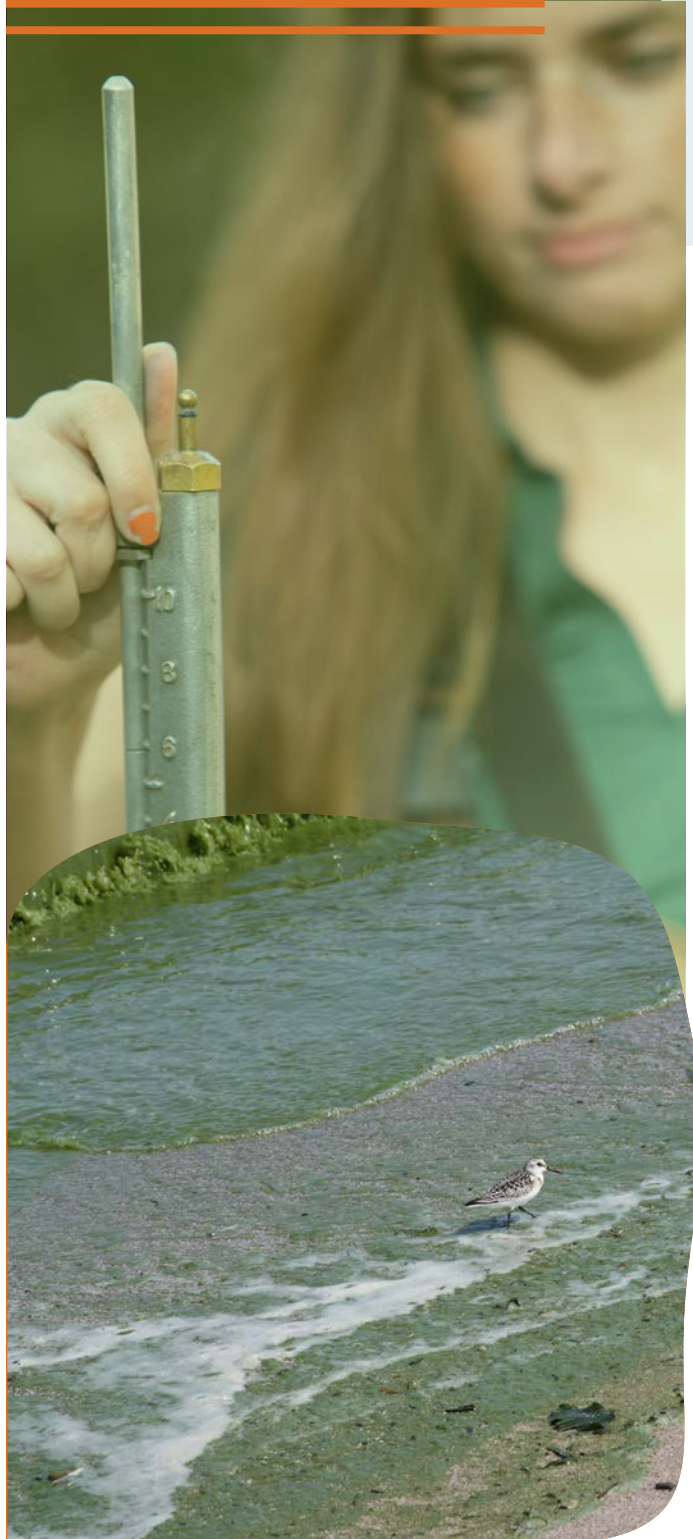
Julia is contacting landowners in the Maumee River Watershed, which flows into Lake Erie.

"We'll be constructing wetlands or riparian buffers to capture some of the nutrients and sediment that are causing problems," she says. "We have hundreds of potential properties identified, and we're talking to landowners to see if this project can work for their property. A big focus of this project is to do some of this work on marginal or low producing parts of agricultural lands. It doesn't have to represent a loss of productivity and could actually be an alternative source of revenue."

Landowners can enter parts of their property into a conservation easement, or they could sell it to a land trust or other entity.

"The history of this region is very interesting," Julia says. "It used to be a formidable swamp. When it was settled and converted to agriculture, tile systems were installed to drain the land. There was a whole economy around it, with tile factories emerging throughout the region. Now, we're striving to restore a small percentage of those original wetlands into this landscape that's been so dramatically transformed."

This project would not have been possible without a partnership with Civil & Environmental Consultants (CEC) and Water & Land Solutions (WLS).





The project partners all play an important role — Rural Action is coordinating the project and leading community engagement, CEC is leading design and GIS targeting, and WLS is highly experienced with developing landowner agreements that will make project implementation possible.

In 2022, the project is focusing on landowner outreach, site selection, and conceptual design development. Project engineering, permitting, and construction are expected to occur in 2023-24.

“We’ll be determining phosphorus loading off these properties, the acres of wetland constructed, and the number of trees planted,” Julia says. “This project is expected to benefit quite a few threatened and highly valued plant and animal species, not to mention the public health and economic benefits that come with improved water quality.”





# HELPING FOREST FARMERS HARVEST SUCCESS

Is it really possible to quit your day job to become a full-time forest farmer?

Meet Rick Felumlee, who went from searching the internet for information about non-timber forest products to attending workshops to launching Mayapple Farms. And quitting his day job.

Rick was looking to supplement his income by planting crops on his forested land in Dresden, about an hour east of Columbus, when he first discovered Rural Action's Sustainable Forestry program. It wasn't long before he was attending Rural Action and United Plant Savers workshops about ginseng and ramp production, which paved the way to launching Mayapple Farms five years ago.

"Early on was kind of an experimentation thing," Rick says. "The more we got involved, the more we learned about the market side of things through Rural Action workshops. It came into focus that we could turn this into a full-time business."

Rick currently works full time on Mayapple Farms while his wife, Jan, juggles her job in the insurance industry with work on the farm. They're close to the day when she can dedicate herself to the farm full time, too.

"He is that mythical creature – the full-time forest farmer," says Rural Action Sustainable Forestry Program Manager Andrea Miller. "Everyone is asking if this is possible. He turned it into a serious business venture and did it creatively with a diversified operation."

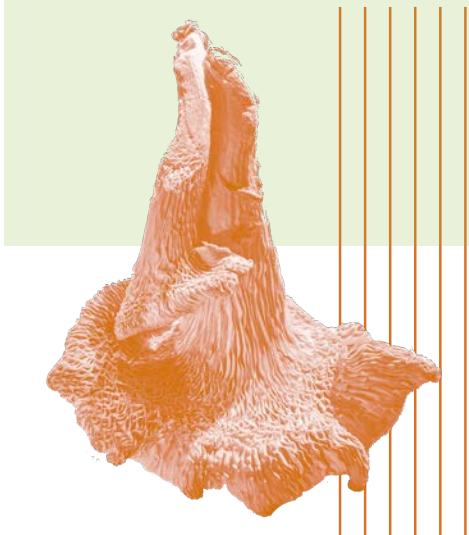


Rural Action's Sustainable Forestry program moved into new offices at Sugar Bush Farm in 2021 and brought in Karam Sheban as program director. New equipment was acquired to help landowners harvest their timber in sustainable ways, and The Appalachian Wood Craft Scholarship was created in partnership with Hocking College and the Community Makerspace to teach people how to create businesses around woodworking. And major emphasis is placed on non-timber forest products that help landowners like the Felumlees earn income from their land in sustainable ways.

"We're a hybrid with botanicals and ramps," Rick says. "Our main focus has been mushrooms for the past few years, on logs and wood chips. We have a separate indoor mushroom operation."

Mushrooms were a "happy accident," Rick explains. "We started looking solely at the plants, common botanicals. But one of the challenges was the time scale that those crops take so we started looking for quicker-cycle crops we could grow in the meantime as a bridge. One of those was the mushrooms. When we started introducing them at farmers markets, it was clear that was our most popular product. It's become the largest part of our business."

Mayapple Farms also grows garlic, ginger, and turmeric on nearby land they are leasing from his parents.







“Most of our sales are direct-to-consumer,” Rick says. “We do a lot of farmers market mushrooms and we’re running a CSA through winter and spring.”

In addition, Mayapple is certified organic, which is “a pretty huge feat,” Andrea says. “They have only five acres or so. We often think it takes hundreds of acres, but the reality is that by being open minded you can do a lot with just a little.”

Rural Action’s Sustainable Forestry program helped Rick get started, and he’s now come full circle, serving as a presenter and mentor at our workshops.

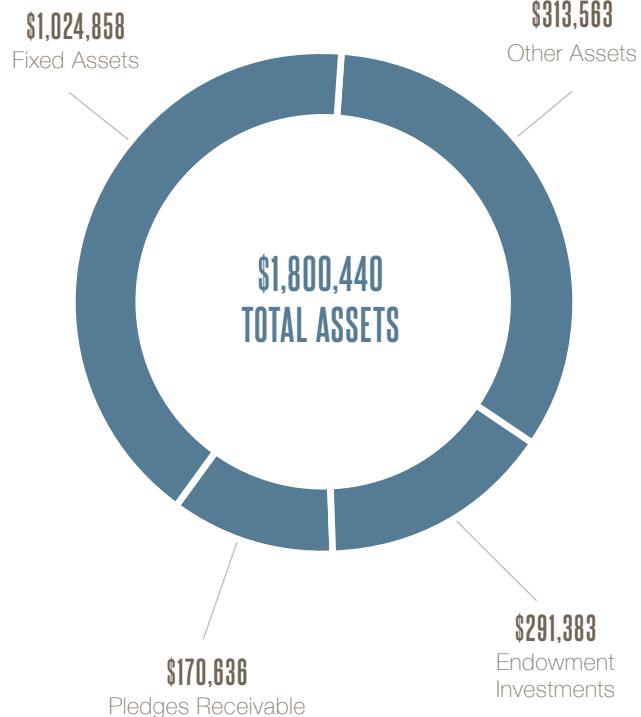
“Rural Action does a really good job of promoting the events that we’ve been involved in, and the networking opportunities lead to other opportunities outside Rural Action,” he says, noting that he met Penn State’s Eric Burkhardt last fall during the forest farming conference and talked to Burkhardt’s agroforestry classes about mushroom farming in April.



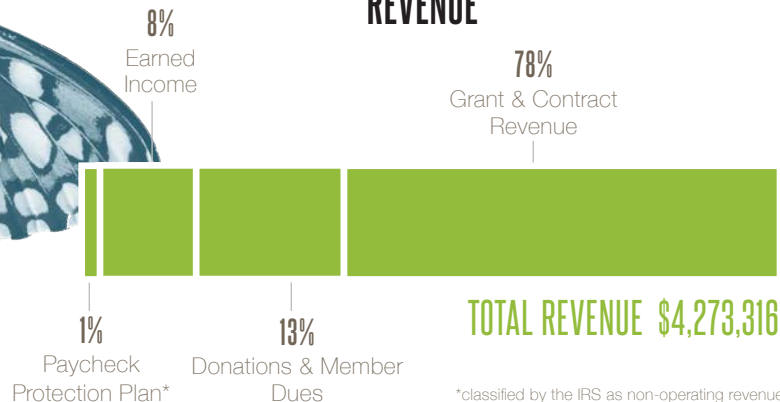


# 2021 FINANCES

## ASSETS



## REVENUE



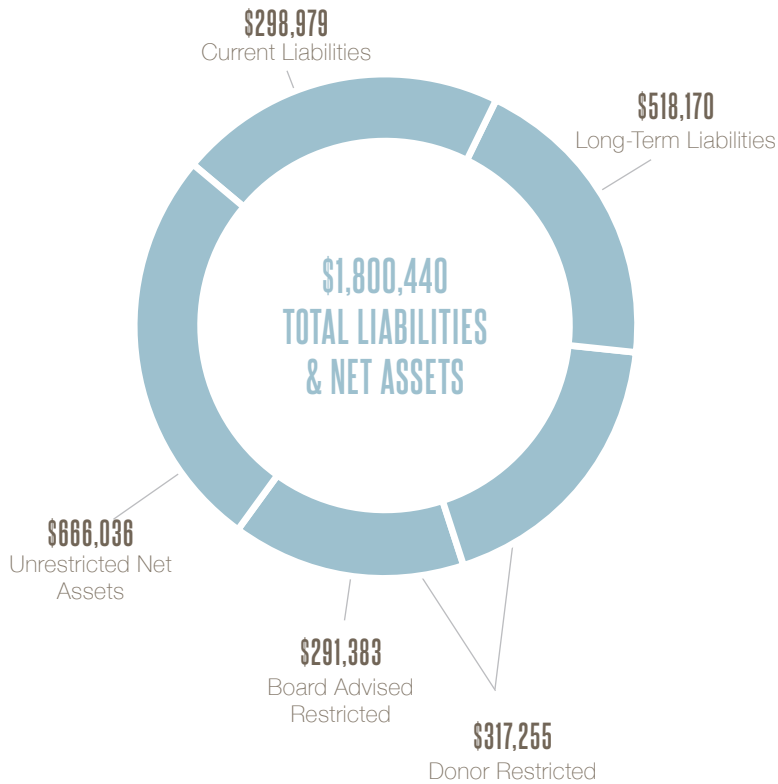
## FUNDERS

American Electric Power-Ohio  
 Appalachian Center for Economic Networks  
 Appalachian Investment Ecosystem Initiative  
 Appalachian Regional Commission  
 Appalachian Sustainable Development  
 Appalachian Voices  
 Athens County Foundation  
 Athens County Land Reutilization Corporation  
 Athens-Hocking-Vinton 317 Board  
 Big Brothers Big Sisters of Central Ohio  
 Buckeye Hills Regional Council  
 Buckeye Trail Association  
 Camp Ot'Okwa  
 Catholic Campaign for Human Development  
 Central Appalachian Network  
 City of Athens

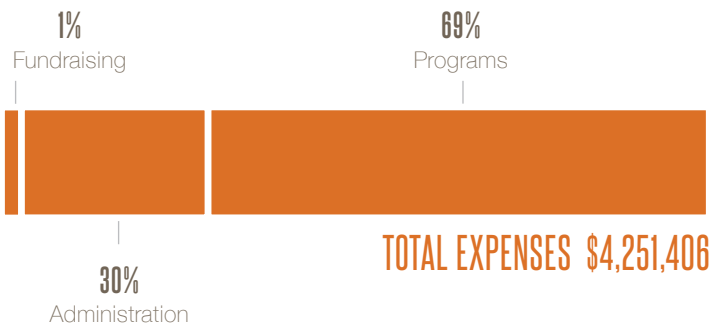
Claude Worthington Benedum Foundation  
 Coplin Health  
 Corporation for National and Community Service  
 Coschocton Foundation  
 Crane Hollow Preserve  
 Dawes Arboretum  
 Dupont Corporation  
 Edge of Appalachia  
 Educational Foundation of America  
 Epstein-Teicher Philanthropies  
 Finance Fund - Healthy Food For Ohio Initiative  
 Foundation for Appalachian Ohio  
 Huff Run Watershed Restoration Partnership  
 J.M. Kaplan Fund  
 Joyce Foundation  
 Just Transition Fund

Kleinpenny Educational Fund  
 Licking County Parks District  
 Mud Run Stream Keepers  
 Muskingum Valley Parks District  
 Muskingum Watershed Conservancy District  
 National Forest Foundation  
 Nelsonville Community Dinner  
 New York Community Trust  
 Norma Johnson Center  
 Ohio Department of Agriculture  
 Ohio Department of Natural Resources  
 Ohio Environmental Protection Agency  
 Ohio Farm Bureau Foundation  
 Ohio Hill Country Heritage Area  
 Ohio State University Extension  
 Ohio University

## LIABILITIES & NET ASSETS

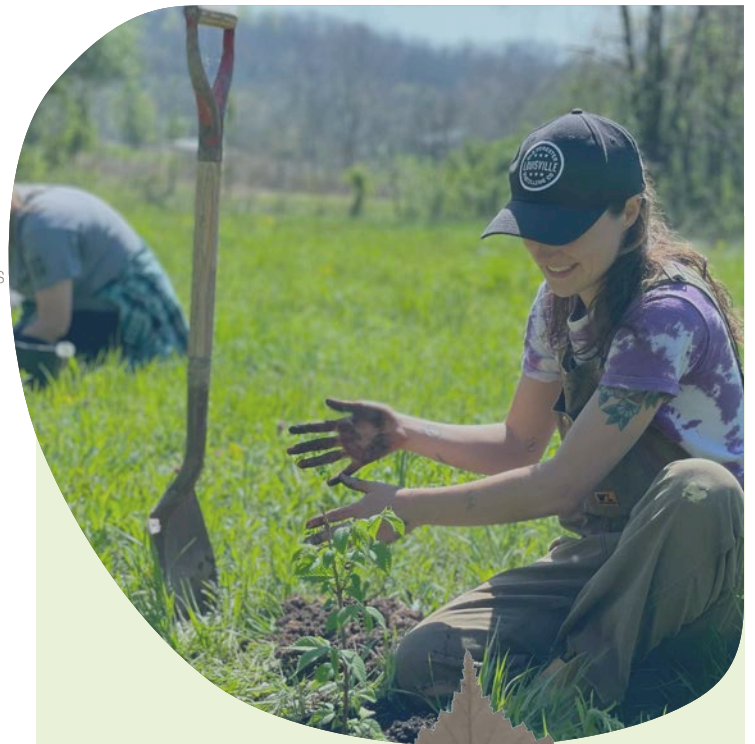


## EXPENSES



OhioHealth  
 Ora E. Anderson Conservation Fund  
 Osteopathic Heritage Foundations  
 Outdoor Recreation Council of Appalachia  
 Oxbow River & Stream Restoration, Inc.  
 Raccoon Creek Watershed Partnership  
 Rural LISC - Local Initiatives Support Corporation  
 ServeOhio - Ohio Commission on Service and Volunteerism  
 Sisters Health Foundation  
 Stream + Wetlands Foundation  
 Stuart's Opera House  
 Sugar Bush Foundation  
 Sugarbush Valley LLC  
 Sustainable Ohio Public Energy Council  
 USDA - Forest Service

USDA - National Institute for Food and Agriculture  
 USDA - Natural Resources Conservation Service  
 USDA - Rural Development  
 USDA Rural Utilities Service  
 U.S. Department of Energy - Office of Energy Efficiency & Renewable Energy  
 U.S. Environmental Protection Agency  
 United Campus Ministries  
 United Plant Savers  
 Virginia Tech  
 Wayne National Forest





# Members & Donors

Members are central and essential to the work of Rural Action, and we count on them for their leadership, advocacy, volunteerism, and financial support. The following individuals and organizations helped to sustain the organization in 2021 and allow us to plan for the future. Learn more about membership by visiting our website at [www.ruralaction.org/join](http://www.ruralaction.org/join)

Network for Good  
Athens Area Chamber of Commerce  
Hocking Hills Adventures  
Donkey Coffee and Espresso  
Snowville Creamery  
Christ Lutheran Church  
Funny Times Peace Fund  
Miille/Richard Family Fund  
Helping Hops  
Lowe Marshall Trust  
United Way of Central Ohio  
Kroger  
Shagbark Seed & Mill  
Blue Rock Station LLC  
Third Sun Solar  
It's Still Today  
Gerard Hilferty and Jacquelyn Fokes  
Editorial Partners  
Chris Abbuhl  
Simon Abeid  
Susi Acord  
Anna Adams  
Doug Albaugh  
Merl and Mim Almquist  
Elizabeth Ames  
Chris Anderson  
Carla Ankrom  
Alexis Ann  
Gloria Armheart  
Dale and Lori Arnold  
Patricia Aubrey  
Jan Baker  
Tom and Sue Banchich  
Janell Baran and Peter Kuhlman  
Joe Barbaree  
Mike Barr  
Phyllis Baxter  
Carol Beale  
Megan Bee  
Laura Bennett  
Robert Benz  
Gillian and David Berchowitz

Ted Bernard and Donna Lofgren  
Danielle Bernstein  
Kathy Berry and Chip Kreig  
Joey Berry  
Kenton J Bertram  
Rudi Beutner  
Sara and Joe Ryckebosch  
Cynthia and Ron Birt  
Roberta Bishop  
Jeannie Blake  
Chuck of All Trades  
Chuck and Carol Blyth  
Nick and Tammy Bobo  
Richard and Barbara Bodine  
Les Boggs  
Mary Jo Bole  
James Bond  
Scott and Lorrigan Booth  
Mary Ann Borch and Bob Kerber  
William and Lauren Borovicka  
Breanna Boudinot  
Alexandria Bovia  
Jim Bowman  
Jeremy and Jen Bowman  
Sue and Alan Boyd  
Marcus Bratton  
Joe Brehm  
Mike and Jane Broecker  
Paula Brooks  
Amanda Brooks  
Linda and John Brose  
Corrine M Brown and Barbara Berry  
Angela & Mike Brown  
Marshall and Patricia Brudno  
Toby Bryant  
Cindy Bryant  
Jack Buckingham  
Kevin Buettner  
Weylin Burgett  
Aaron Burk and Jane Balbo  
Diane Burkhart  
Craig and Tammi Butler  
Linda and Kenneth Button

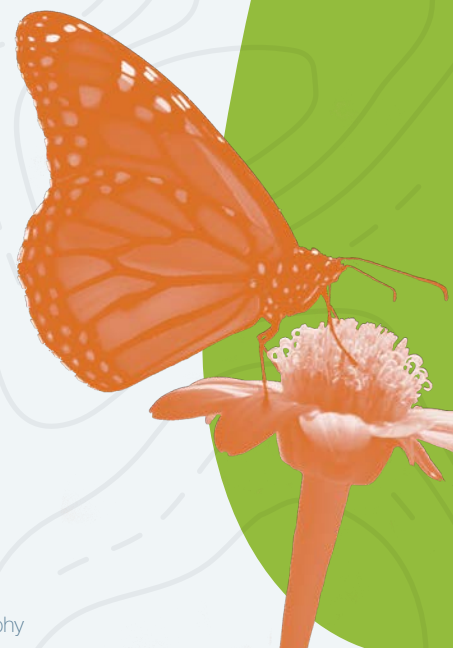
Jenny Byers  
Paula Bz  
Pat Cadle  
Tom Calhoun  
Brad Campbell  
Stephanie Campsey  
Heather and Philip Cantino  
Bluecreek Shiitake Farm  
Ralph and Brandy Captain  
Kelly Capuzzi  
Richard Carlson and Dana Kuhre Carlson  
Jo and Michael Carpenter  
Lisa and Scott Carson  
Katie Challis  
Russell and Liz Chamberlain  
Ariel Chamberlain  
Leona Cibrowski  
Jeffrey Cindric  
Patricia Clark  
Linda and Pete Clark  
Elizabeth Clodfelter  
Sandra and David Cobb  
Age of Steam Roundhouse  
Green Reach Consulting  
Sarah Conley-Ballew and Zach Gibbons-Ballew  
Alfonso Contrisciani  
Kelly Cooke  
Garth Coombs, Jr. and Amy Coombs  
Karen Cooper  
Pam Cooper  
Kathryn and Chris Cooper  
Luann Cooperrider  
Mary Costello  
John Cotton  
Micah Covert  
Sam Crawl and Terry Kelleher  
C. Chad Cully  
Lydia Cunningham  
Matt Outlip  
Geoff and Kirsten Dabelko  
David and Elaine Dabelko  
Robert Henninge and Rebecca Dale  
Judith Daso  
Kevin Davis  
Zach Holl and Michelle Decker  
Cady Della Lana  
David Descutner and Delysa Burnier  
Kristen Dettwiller  
Michael DeWitt  
Berry Dilley  
Cara Dingus Brook and Dominick Brook  
Marti Dolata  
Michael Dorn

Susan Dorsky  
Mark Doud  
Grant Downes  
Eileen Droy-Bardon  
Colleen Duffey  
Kevin Duffey  
Tony Logan and Mary Duffey  
Joel Dufour and Chris Schimmoeller  
D. Reber Dunkel  
Leslie Dunn  
Leslie Dybiec  
George Eberts  
Elaine Edge  
Adam Edgington  
Nancy Edwards  
Ken and Deborah Edwards  
Bob Eichenberg and Cecilia Rinaldi  
Mary Eisel  
Erin Eisenhower  
Century Insurance Group  
Homer Elliot and Robin Barnes  
Cynthia Ellis  
The Elsassers'  
Lara Eventide  
Belle Everett  
Steve Faivre  
Mitch and Sue Farley  
Kurt Farry  
Ana Rosado and Christopher Feger  
Tim Ferrell and Amy Mackey  
Terri Fetherolf  
Tanner Filyaw  
Sarah Fisher  
Leslie and Jack Flemming  
Rick Fligor  
Don Flournoy  
Jill Flowers  
Jennifer Foehl  
Ryan Fogt  
Guy Ford  
Michael Thomas Ford  
Linn Forhan and Patricia O'Brien  
Bryan Fortson  
Marilyn Sue Foster and Don Shamblin  
Jessica and Rich Fox  
Mary and Jim Frate  
Dottie Fromal  
Ellen and Marcus Fultz  
Kristina Gall  
Teresa Galloway  
Danding Gan  
Jennifer Garner  
Caitlin Garrity and Sarah Maj  
Michael Adams & Julie Gee  
Alan Geiger  
Ellen Gerl and James Schulz

Debbie Gibson  
 Maggi Gifford  
 Sara Gilfert  
 Alden Gilliom  
 John Gilliom and Amy King  
 Tara Gilts  
 Gary Goosman and Mary Ann Westendorf  
 Jesse Goosman  
 Linda Krinn Gorman  
 Constance Gabbard and Milton Greek  
 Marlene and Gregory Greene  
 Geoffrey and Michelle Greenfield  
 Theodora Lee Gregg  
 Lori Gromen and Kent Butler  
 Mark Gropitch  
 Amy and Bob Grove  
 Michael Hackworth  
 Miles Hadley  
 Greg Hadley  
 Marilyn Hadley Reed  
 Morgan Hager  
 Claudia Hale  
 Kimberly Hale  
 Stacy Hall and Bill Dix, III  
 Meredith Hamsher  
 Dawn Handley  
 Wendy Hanna  
 Barbara Hanselman  
 Hedy Hanselman  
 Catherine Hare  
 Barbara Harrison and Pat Gordon  
 Miriam Hart  
 Hannah Hartman  
 Brent and Sara Hartman  
 Marcia Hartman  
 Luther and Jeanne Haseley  
 Warren Haydon  
 Joe Hazelbaker  
 David and Jeanne Heaton  
 Jeremy Held  
 Timothy and Susan Held  
 Sarah Helfrich and Creston Stewart  
 Anna Hess  
 Kristi Hewitt  
 Ambie Hice  
 LeeAnn Hill  
 Frederick and Teresa Hindman  
 Tanya Hire  
 Holly Hochstetler  
 Janet Holladay  
 Paul Tescher and June Holley  
 Betty Hollow  
 Jennifer Holmes  
 John Hoopingarner  
 Karen Hopp

Lowell Howard  
 John and Suzanne Howell  
 Jarvis Huck  
 Megan Hutchinson  
 Matthew James  
 Anita James  
 Robert Jardine  
 Katherine Jellison and David Winkelmann  
 Primaterra Farms  
 Uncle Buck's Riding Stable and Dance Barn  
 Ryan Johnson and Andrew Pueschel  
 Susan Johnson & James Lowry  
 Bethany Joyave  
 Daniel Karney  
 Mary Jane Kelley  
 Deborah Kerwood  
 Jeffrey Shiit and Amy King-Shiit  
 Kristen and William Kiser  
 Suzanne Knauerhase and William Rhinehart  
 Angela Knicole  
 Elizabeth Knies  
 Christine Knisely and David McCoy  
 Paul E. and Catherine Knoop  
 Faith Knutsen  
 Steve and Rhonda Koch  
 Tom and Barbara Kostohryz  
 John and Kelli Kotowski  
 Margy Kramer and Peter Woyar  
 Aubrei Krummert and Julio Arauz  
 Real World Organizing  
 Michael Kubisek  
 Carol and Bruce Kuhre  
 Tanja Kuhre  
 Jennifer and Bill L'Heureux  
 Neill and Karoline Lane  
 Joel Laufman  
 Marissa and Nick Lautzenheiser  
 Sallie Anne Roberts and Robert Lazuka  
 Ren Leaflight  
 Matt Ledford  
 Joe Lewis  
 Marsha Lewis  
 Joanne Limbach  
 Sally and Don Linder  
 Melody Linscott  
 Hailey Linton  
 Amy Lipka  
 Michael Lloyd  
 Marla and Randy Longenecker  
 Beth Longenecker and William Kortier  
 Mike Lorz  
 Susan Loughridge  
 Lynn and Tom Lovdal

Laurie and Peter Lowe  
 Susan Luring  
 Philip J and Carol J Lyons Foundation  
 Leah Magyary  
 Seema Mahato  
 Karen Mammone  
 Jeff Mantel  
 Jeremy and Lexi Maple  
 Joseph Maroon  
 Zebulon Martin and Rachael Crouch  
 Dorian Martin von Stonebarger  
 Paul Mass and Kate Fetterolf  
 Vicky Mattson  
 Claudia McAllister  
 Debra McBride  
 Micah McCarey  
 Leota McDaniel  
 Kathryn McFarland  
 Susan McGarvey  
 Mark M McKenzie  
 Jon McMichael  
 Susan McNish  
 Diane McVey and Craig Johnson  
 Dominic Mensurati  
 Joyce Meyers  
 Dr. Neil E. Richard and Dr. Valorie J. Miille  
 Jessica Miller  
 Jen Miller  
 Lauren Miller  
 Kelly Miller  
 Joanna L. Mitchell  
 Danny Moates  
 Marcus Molea  
 Adriane and Martin Mohlenkamp  
 John Molinaro and Solveig Spjeldnes  
 Jolene Molitoris  
 Ann Money Penny and Michael Kleinman  
 Kate Montgomery  
 Rose Marie Isgrigg and Scott Moody  
 The Airloom Company  
 Lesley and Scott Moore  
 Barb Moran  
 Sharon Morel  
 Ernest Warther Museum and Gardens  
 Penny Morgan and Paul T. Corbman  
 Kelly Morman  
 Michele Morrone  
 John Munsell  
 Linda Murdock  
 Timothy Murdock  
 Ken Hicks and Theresa Murphy





# Members & Donors Continued

Mary Nally  
M Duane and C. Ruth Nellis  
Brenda Nelson  
Joseph and Vivian Newbold  
Kevin And Kay Nichols  
Rodney and Linda Nippert  
Julianne Noxsel  
Southeast Ohio History Center  
Tom O'Grady  
Kathryn Oches  
Kim Orben  
Doug and Carolyn Orr  
Kathryn Ort  
Gary Oyler  
Jessica Page  
Marcia Palleschi  
Alan and Ruth Palo  
Saumya Pant  
Michele Papai and David Drabold  
John Hauser and Linda Parsons  
Steve and Connie Patterson  
Paul Patton  
Lynette Peck  
Howard Peller  
Terrie Perez  
David Persinger  
Matthew Peters  
Tim and Diane Pfaff  
Debbie Phillips  
Nancy E. Pierce  
David G Pilcher  
Nancy Pitre'  
Angela Porvaznik  
Diana and Richard Powell  
Jessie Powers  
Bonnie Prince  
David and Dorthy Pritchard  
Craig McCarthy and Holly Raffle  
Stephanie and Benjamin Randolph  
Maxine Rantane  
Chris Ratcliff  
Fitz Read  
Chris Redfern  
Tom Redfern and Jane Forrest  
Redfern  
David Reid  
Tom Reid  
Allyn and Marsha Reilly  
Stephen and Rhonda Reilly  
Kay Rhyan  
Michele Richey  
Gabriel Riggle

Sue Righi  
Brian and Kirsten Richie  
Carolyn Rizzuto and Gary Conley  
Hope Roach  
Jessie and Roberta Roberson  
Debbie and Greg Robertson  
Joyce Robson  
Stephanie Frisbey-Roll and Mark Edward Roll  
Steve Romine  
Becky and Kip Rondy  
Alexa Ross  
Charles and Alice Ross  
Albert Rouzie  
JF Rupert  
Laura Saltman  
Bernard Salzman  
T.P. and Carol Sauber  
Rod and Linda Sauer  
Elizabeth Sayrs  
Dave Schaffer  
Jeff Schahczenski  
David and Pamela Schatz  
Petra Schmalbrock  
Debbie and John Schmieding  
Women's Supporting Success Group  
Nancy Schoenbaum  
Charles Hambel and Katrina Schultes  
Joellen Scott  
Jeremy Sewell  
Sheila Shafer  
Kaabe and Amy Shaw  
Robert and Arlene Sheak  
Heartwood Handworks  
Wenda Sheard and Richard Thieret  
FabOhio, Inc.  
Jo Ellen Sherow  
Dave Shively  
Michelle Shively MacIver  
Mark and Marcia Shubert  
Jen and David Simon  
Kali Sites  
Rebecca Vazquez and Mark Skillings  
Casey Slive  
Harriet Slive  
Eric and Martha Smith  
Halee Smith  
Ryan Smith  
Mark and Rita Snider  
Andrew Snow

Jennifer Somerville  
Gina Space  
Zachary Space  
Anne Sparks  
Cherokee Valley Bison Ranch  
Carie and Jarrod Starr  
Curtiss Wright and Pieta Steffens  
Daniel Mole and Heather Stehle  
Mike and Jan Steinmaus  
John Stelzer  
Robin Stewart  
Jay and Shannon Stewart  
Cynthia Stewart  
John Stock  
Janalee Stock  
Samantha Storer-Morman  
Jenny and Jordan Stotts  
Cita Strauss  
Jaymie Strecker  
Jim and Josie Stricklin  
Francis Sullivan  
Robert and Polly Sumney  
Mark Sunderman  
Judith Svendsen  
Erin and Curt Sykes  
John H Taylor  
David Tees and Melanie Schori  
Katy Kropf and Nick Tepe  
Lyndsey Teter  
Brett Thomson  
John Thorndike  
Shirley Tipple  
Rich Tomsu  
Kay Tousley and William Owens  
Diane Tremper  
Tina Trettin  
John and Janis Tysko  
Victoria Ullmann  
Katie Ulloa  
Samantha Rommel and Brian Vadakin  
Terry and Sue Van Offeren  
Deborah Van Valkenburgh  
Laurie and Kate Vancouver  
Perry Varnadoe  
Lisa Villamil  
Longleaf Foundation  
Bruce and Hylie Voss  
Gregory Kessler and Melissa Wales  
Julie Walker  
Jeffery Walters  
Ric Wasserman

Rev. James and Carol Waugh  
Alyssa Webb  
Sydney Webber  
Madelyn Wecker  
Eileen Weidner  
Wanda and Mark Weinberg  
Robert Weiser and Kristen Berry  
Regan and Michael Welch  
Cecelia Weldon  
Steven Wellstead  
Susan West  
Megan Westervelt and Josue Arteaga  
Allen and Corrine White  
Paul Wiehl  
Keith Wilbur  
Heidi Wilhelm  
David and Degee Wilhelm  
Vicky Williams  
Heather Williams  
Sondra Williams  
Thomas Wolf  
Shawna Wolf  
Susan Wolpert  
George Wood and Marcia Marie Burchby  
Jane Z. Woodrow  
Jon Woodward  
Emma Wright  
Anna Wright  
Jeff Wunderly and Deb Dreifort  
Peter Wuscher  
Mona Yancey-Spencer  
Sharyn Yulish  
Stanley and Sally Zalek  
Tom and Sue Zano  
Jacki Zevenbergen

# IN MEMORIAM

## MEMBERS WE LOST IN 2021

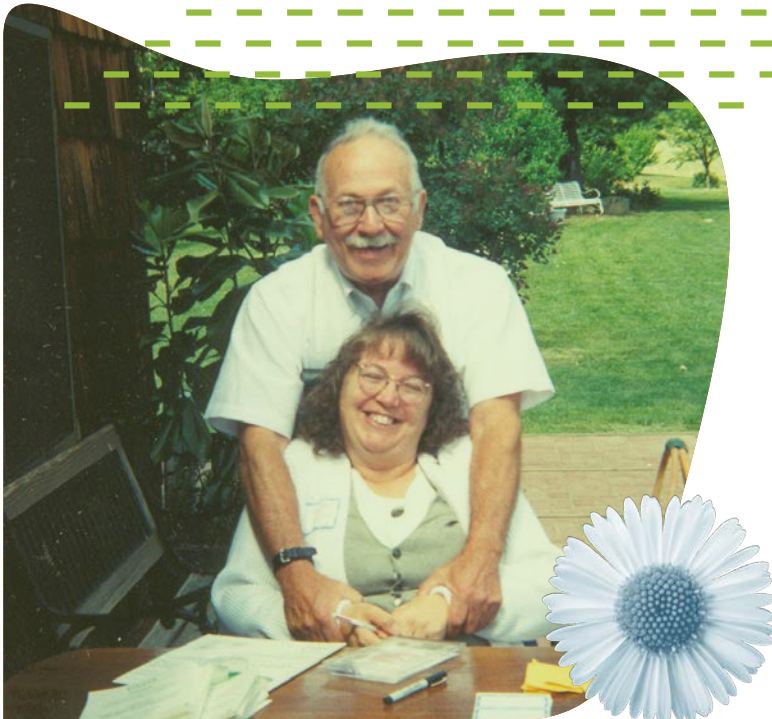
John Knouse, Frank Hare, Corinne McCament,  
Jerry Hartley, Charlotte Kasl, and Joseph Berman



### JERRY HARTLEY

Jerry Hartley, a remarkable human being and a true renaissance man, passed away on July 20, 2021. Not only was he a local historian, a deep sea diver, an archeologist, a wonderful storyteller, and an amazing VISTA volunteer, he was totally committed to preserving the history of the region. Jerry's work with local communities as a VISTA made it possible for Rural Action to gain a foothold in community development work. Born in Millfield and raised in Glouster he had a deep understanding of the Appalachian mindset. His interactions as a community organizer benefited from his vast knowledge of the region and its culture. Jerry was no stranger to Shawnee, Glouster, Congo, Corning and Trimble, just to name a few of the places touched by him. He had the unique ability to fit into any situation whether discussing history with one of his OU professors or telling stories of coal miners with local folks, he was totally comfortable. This was a huge asset to his organizing.

Jerry was a U.S. Air Force Veteran and was a member of the Chauncey AMVETS. He retired from the Poston Power Plant, and he enjoyed horses and farming. He always had time for friends in need, and served as a mentor and friend to a number of young people in the region. Jerry had a great, ornery sense of humor, and if you spent any time at all with him you got to see that in action. He was pragmatic and hardworking, but found time to have fun and connect with people along the way.



Along with his community work, Jerry sat on the first VISTA InterCorps Council at Serve Ohio and served as a liaison with Ohio University for the AmeriCorps All Member Gatherings for three consecutive summers. He loved serving as a VISTA and he brought his love of the region and its people to everything he did. Jerry helped Rural Action learn and grow as an organization, and he was a friend to many of our service members, staff and board members over the years.

Jerry helped many of us learn more about the local communities in which we work, and he helped many of us be more grounded in the work. Every one of us who had the great privilege of spending time with Jerry came away having learned something.



# STAFF

Debbie Phillips  
 Brian Vadakin  
 Susi Acord  
 Alexandria Polanosky  
 Amy Lipka  
 Deb Moreland  
 Rebecca McKee  
 Badger Johnson  
 Bob Benz  
 Marcus Bratton  
 Jen Miller  
 Anthony Cangemi  
 Christy Pugh  
 Laura Farrell  
 Rick Fligor  
 Tom Redfern  
 Joe Barbaree  
 Molly Sowash  
 Michelle Ajamian  
 Sarah Conley-Ballew  
 Karam Sheban  
 Tanner Filyaw  
 Andrea Miller  
 Nathan Schlater  
 Tim Ferrell  
 Marissa Lautzenheiser  
 Shana Angel

Caitlyn Park  
 Matt Ledford  
 Joe Brehm  
 Darcy Higgins  
 Ed Newman  
 Maria Bonner  
 Aaron Dye  
 Paul Patton  
 Jessica Dotson  
 Michelle Shively MacIver  
 Madison Donohue  
 Pauline Phillips  
 Sadie Meade  
 Emma Loomis-Amrhein  
 Kylee Minick  
 Raina Schoonover  
 Dan Vorisek  
 Ellie Dudding  
 Jasmine Facun  
 Shannon Stewart  
 Bryn Sowash  
 Meredith Hamsher  
 Aaron Dye  
 Jessie Thompson  
 Shannon Pratt-Harrington  
 Tyler Bonner



# BOARD OF DIRECTORS

Mary Ann Borch  
 David Descutner  
 Susan Loughridge  
 Kay Tousley  
 T. Chris Wilson  
 Perry Varnadoe  
 Carol Davey-Sayre  
 Shoshanna Brooker  
 Saumya Pant  
 Belle Everett

David Butcher  
 Paul Reed  
 Sam Miller  
 George Wood  
 Ana Rosado Feger  
 Rick Hindman  
 Don Cooley  
 Mark Snider  
 Zach Reizes



## NATIONAL SERVICE MEMBERS & INTERNS & SEASONAL

Justin Brunot	Local food distribution assistant	Kylee Nichols	Rural Action Watersheds
Brady Dotson	Local food distribution assistant	Hannah Kopp	Rural Action Watersheds
Reggie Morrow	Local food distribution assistant	Matt Ledford	Rural Action Watersheds
Tiffany Harvey	Ohio University Graduate Assistant	Molly Sowash	Rural Action Sustainable Agriculture
Lindsay Kindilien	Dietetic Intern	Rachel MacDonald	Rural Action Sustainable Agriculture
Burr Beard	Ohio's Hill Country Heritage Area	Jordan Knisley	Rural Action Sustainable Agriculture
Jacob Richard	Rural Action Sustainable Energy	Mason Korb	Rural Action Sustainable Agriculture
Kelsey Daniels	Raccoon Creek Partnership	Sage Foote	Rural Action Sustainable Agriculture
Emily Feist	Crane Hollow Preserve and OU Museum Complex	Ashley Grace	Raccoon Creek Partnership
Duncan Hadley	Stuart's Opera House	Claire Klodell	Stuart's Opera House
Dana Norris	Crane Hollow	Vicki Irr	Rural Action- Middle Tusc
Elle Dickerman	ORCA	Sophia Sorboro	Rural Action- Middle Tusc
Emily Fouts	Licking Parks	Mia Miller	Rural Action Environmental Education
Shane Benton	Zero Waste	Emily Walter	Rural Action Environmental Education
Moss Nash	Rural Action Environmental Education	Sophie Relitz	Rural Action Environmental Education
Alexis Mikanik	United Plant Savers	Madison Donohue	Rural Action Environmental Education
Hana Duncan	United Plant Savers	George Blankenhorn	Rural Action Resilient Communities and Capacity Builder
Haley Johnson	MVPD	Delia Palmisano	Ohio's Winding Road
Mary Lou Wycinski	OHCHA	Jean Vandervaat	Baileys Trail Association
Sarah Benton	Rural Action Watersheds- Trimble	Sarah Haney	Rural Action Environmental Education
Mike Nicolai	Edge of Appalachia	Jon Flinn	Baileys Trail Association
LaRanda Piatt	Rural Action Forestry	Preston Prather	Baileys Trail Association
Hazel Escobedo	Rural Action Environmental Education	Jessie Dickson	Dawes Arboretum
Abigail Rainey	Dawes Arboretum	Nathan Merckle	Dawes Arboretum
Melissa Beatty	Rural Action Sustainable Agriculture	Aaron Dye	Athens County Land Bank
Brandon Wagner	Dawes Aboretum	Megan Almeida	Rural Action Zero Waste and Community Makerspace
Mary Rust	Rural Action Watersheds	Taylor Major-Dame	Rural Action Zero Waste
Morgan Thomas	Baileys Trail Association	Bailey Grenert	Rural Action Sustainable Energy
Alison McCoy	Rural Action Environmental Education	Ashley Smith	Raccoon Creek Partnership
Mary Popa	Rural Action Resilient Communities	Kelly Love	Raccoon Creek Partnership
Johna Metcalf	Rural Action- Middle Tusc	Kelsey Siekkinen	United Plant Savers
Eleanor Reagan	ASFC	Patrick Fisher	City of Athens and Rural Action Zero Waste
Sam Redfern	SOPEC	Kate Montgomery	SOPEC
Katie Kelly	Crane Hollow and Ohio University Museum Complex	Julian Narvaez-Wiener	United Plant Savers
Miranda Cain	Camp Oty'Okwa	Hannah Bernstein	Intern
Emma Schultz	Hocking Hills Inspire Shelter	Maggie Owens	Environmental Education Intern
Eugene Hancock	Rural Action Sustainable Forestry	Chip Carroll	Ginseng Monitor



## SOCIAL ENTERPRISES

Chesterhill Produce Auction- connects customers throughout Ohio and West Virginia with hundreds of growers who sell local produce, livestock, and wood products at wholesale prices.

Zero Waste Event Productions, LLC- founded in 2015 as a waste diversion service provider at music festivals and public events, educates the public about the benefits of landfill diversion, and encourages long-term reuse and recycling practices.

True Pigments, LLC- produces ferric oxide pigment from acid mine drainage to facilitate the restoration of seven miles of Sunday Creek, fostering the rejuvenation of aquatic ecosystems and stimulating job growth and economic development in the region.

UpCycle Ohio Thrift- focuses on providing gently used goods at low cost to our Southeastern Ohio community while reducing the amount of products entering the waste stream.

Community Makerspace- a collaborative social enterprise that aims to foster creativity and build entrepreneurial and educational opportunities through shared-use equipment and spaces.

Appalachian Understories- provides natural and cultural historic tourism in Appalachian Ohio, hiring local guides, historians, and naturalists to create outdoor experiences for people.







KEEP UP WITH  
OUR WORK  
[RURALACTION.ORG](https://ruralaction.org)

