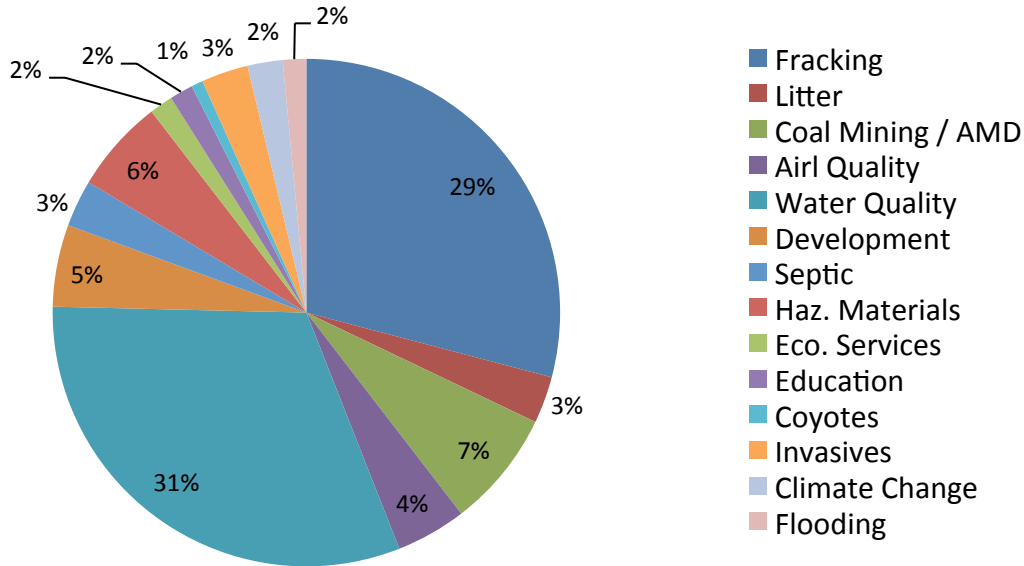


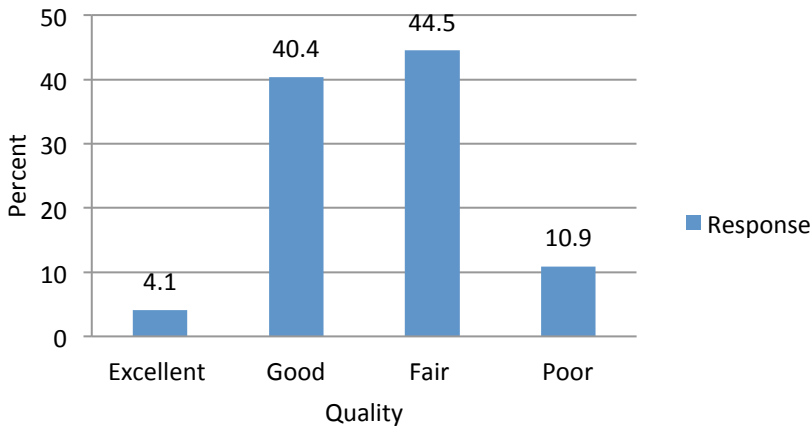
Regional Watershed Planning Survey Results

Results

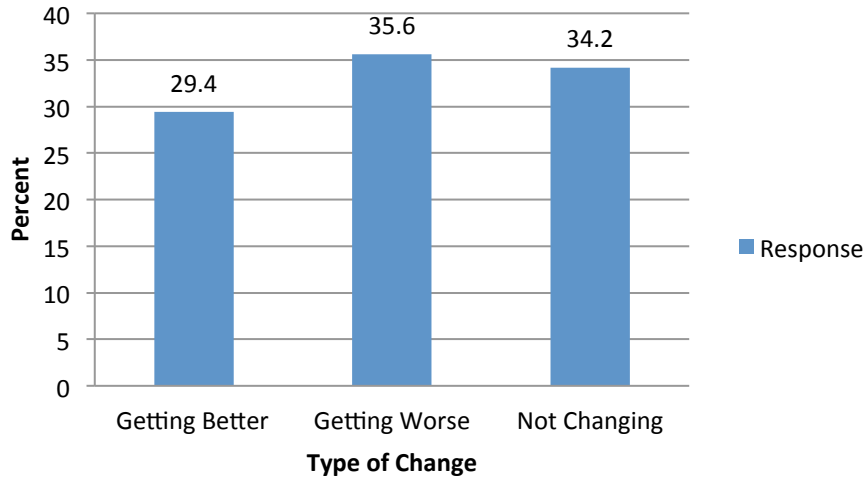
1.) What is the biggest environmental quality concern in your community?



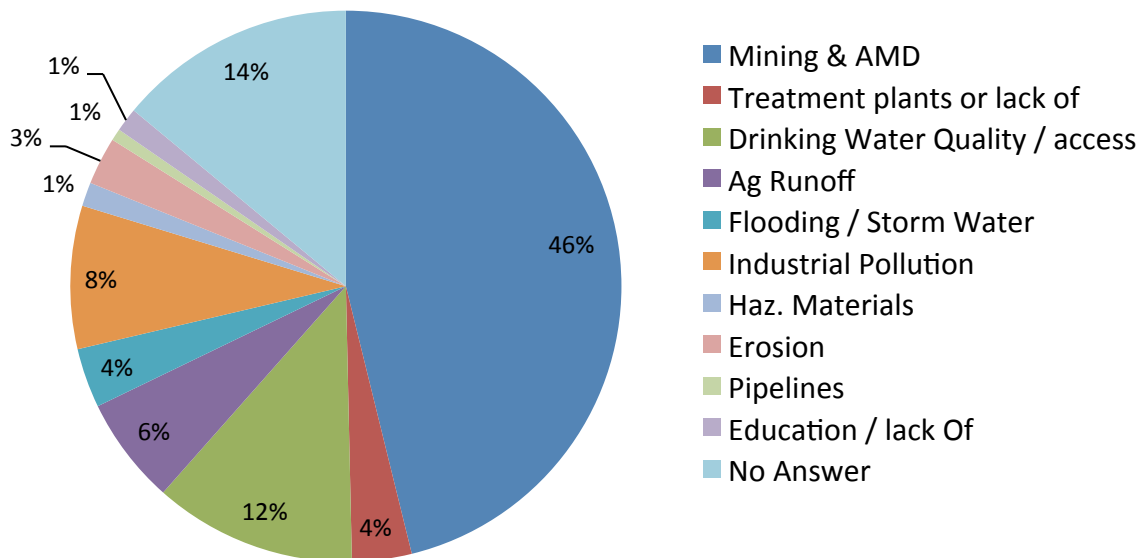
2.) How would you describe the overall health of water resources in your community?(Water resources are defined as being groundwater, streams, rivers, ponds & lakes)



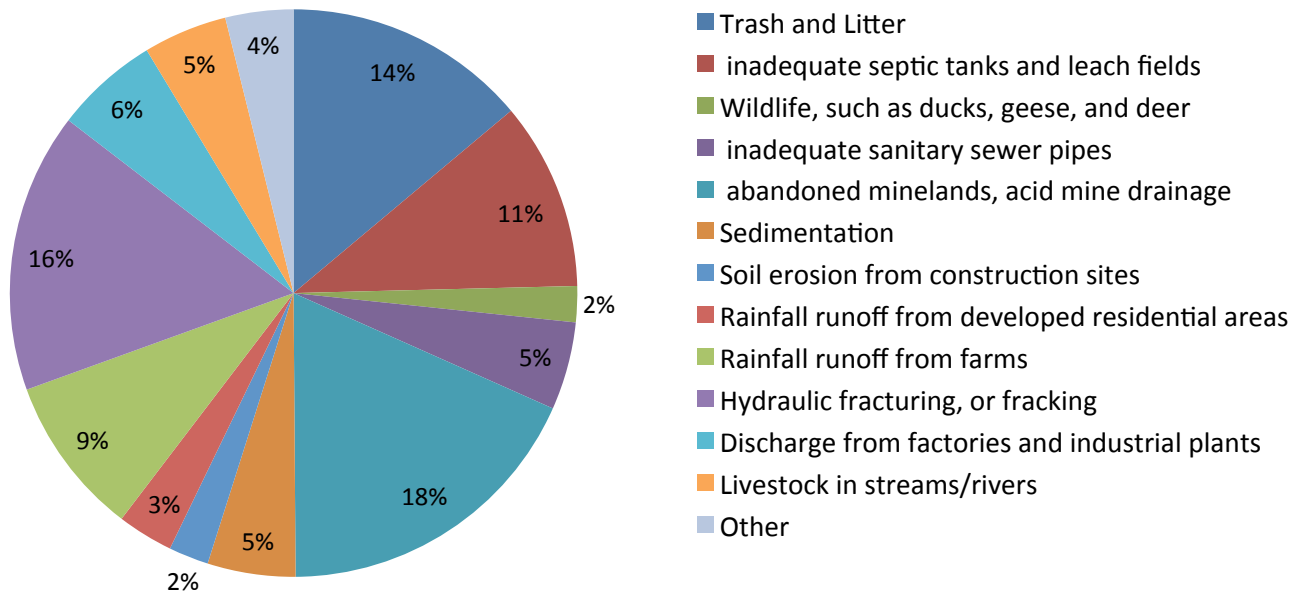
3.) Are Environmental conditions changing in your community



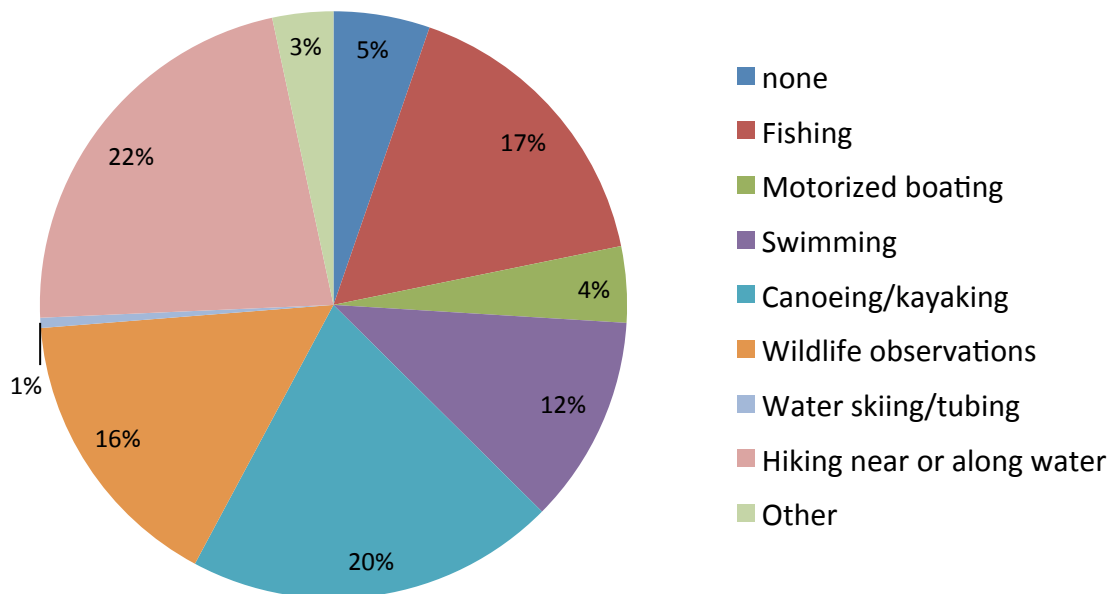
4.) Historically what has been the biggest water quality issue in your community?



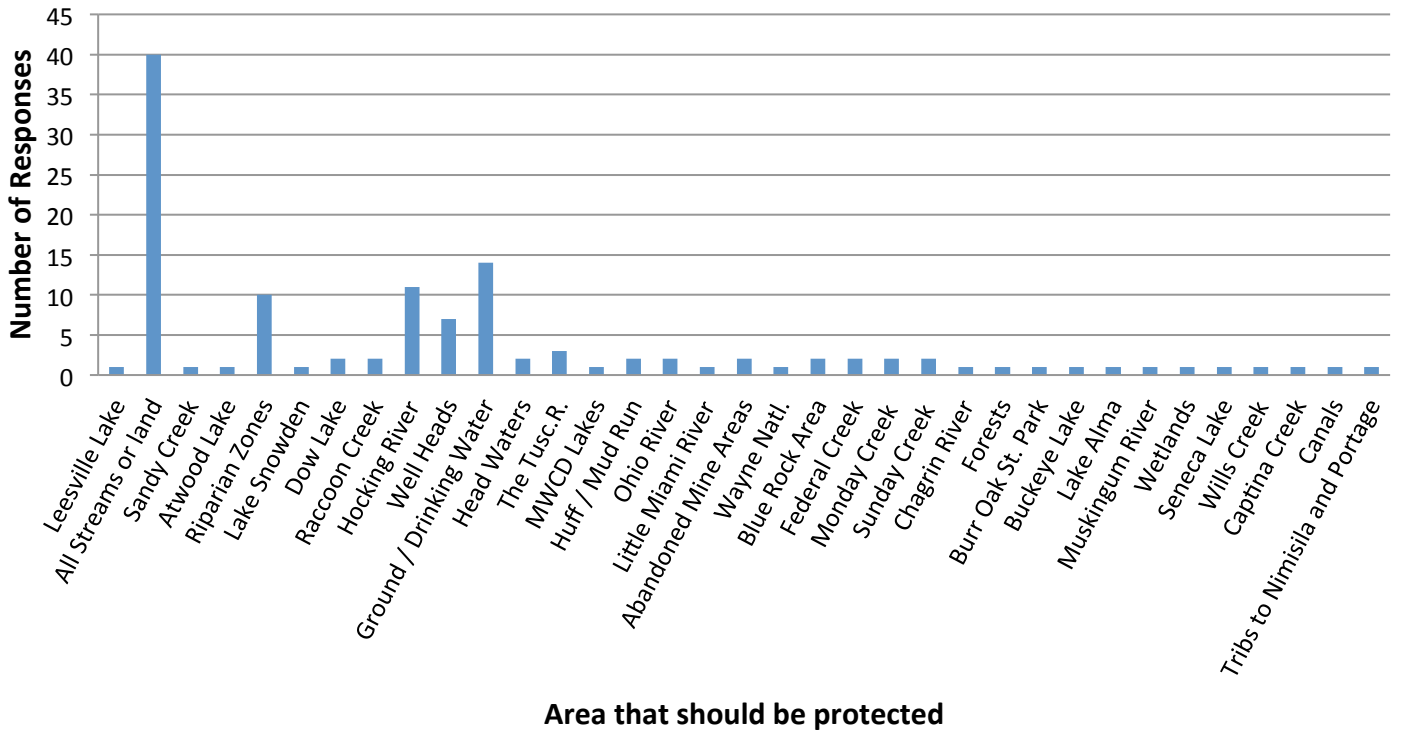
5.) What are the 3 most severe threats to water resources in your community today? (Water resources are defined as being groundwater, streams, rivers, ponds & lakes)



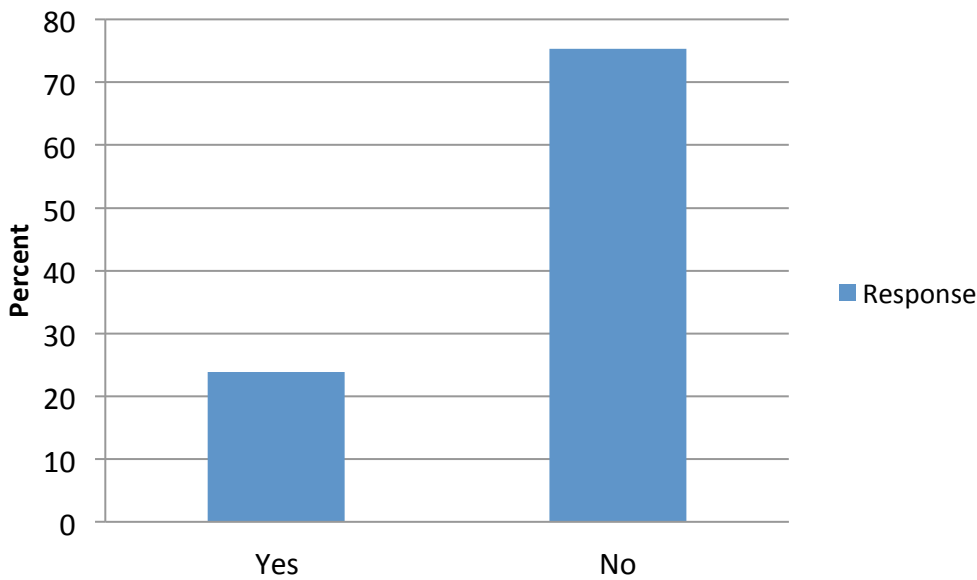
6.) Do you and your family use local streams rivers and lakes for recreations? If so, what type of activities?



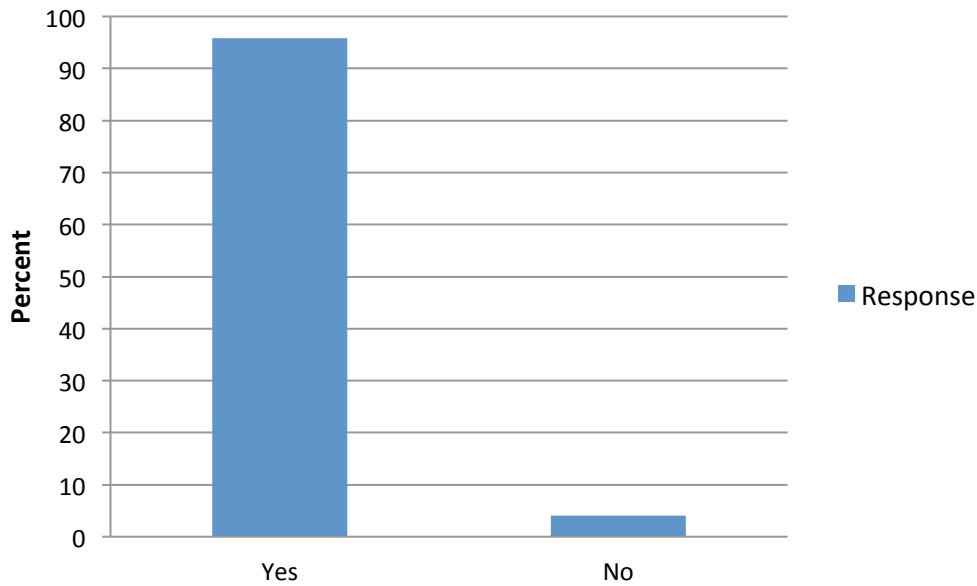
7.) What local areas need to be protected?



8.) Do you think your village/town has the resources to adequately protect it's water resources?



9.) Would you be supportive of projects protecting and improving water resources in your community? If not, why?



10.) Research across the state has indicated that citizens will gladly pay for improved water quality. Would you be willing to pay a small fee (\$5/year) to support programs that improve and protect Ohio's water resources?

